



MegaBlend™ 1100SF

Precision Blending and Distribution System

PRODUCT OVERVIEW

The MegaBlend 1100SF blends/dilutes chemicals that are fed from a remote bulk chemical distribution unit. Stabilized Filtration of the day tank eliminates filter shocking utilizing dual pressure vessels with auto-changeover capabilities. Precision flowmeters blend up to three chemicals or two chemicals with DI water to a volumetric accuracy of $\pm 0.5\%$, relative to the incoming chemistry. The blended chemical is transferred to the day tank and one of two pressure vessels on demand. The blended chemical in the "on-line" pressure vessel is then available to dispense to the point-of-use. Dispense from dual pressure vessels enhances filtration performance. With comprehensive PLC control and a user-friendly graphical operator interface, blend recipes can be easily modified.

- ◆ Excess flow indication and shutdown
- ◆ Leak detection and alarm
- ◆ Manual DI/N2 pump and filter purging
- ◆ Recirculating DI spray guns
- ◆ Blend tank sample port
- ◆ Cabinet door interlocks
- ◆ Encapsulated or cartridge dispense filter
- ◆ Cartridge filter (10")
- ◆ Fed from pressurized input
- ◆ Dual set of pressure vessels with auto changeover

OPTIONS

- ◆ Particle counter connection
- ◆ Aspirated drain
- ◆ Conductivity module
- ◆ FRPP cabinet (S2-93 and FM4910 reviewed)
- ◆ CE Mark 220 V, 50Hz

RELIABILITY

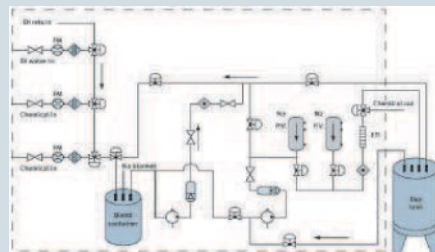
- > 4,000 hrs MTBF
- > 2,500 hrs MTBA
- < 2 hrs MTTR
- > 99.5% availability

PERFORMANCE

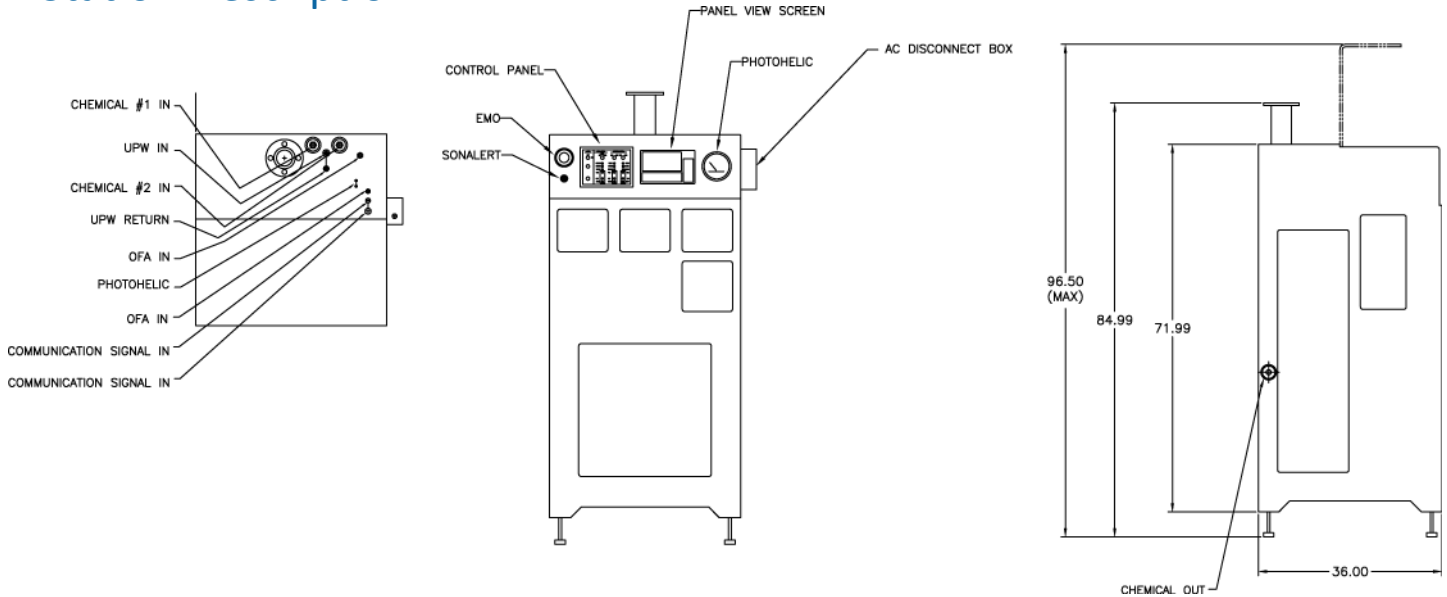
Flow Rate: 2.5 GPM @ 25 psi (DI water @ Exit of CDU outlet)
Accurate/repeatable blend: $\pm 0.5\%$ relative



- ◆ Space-efficient design
- ◆ Blend and distribution circuit
- ◆ Stabilized filtration of the day tank
- ◆ Blend accuracy of $\pm 0.5\%$
- ◆ Simple modification of blend recipes
- ◆ Dual pressure vessels with auto-changeover for enhanced filtration performance
- ◆ SEMI S2-93 reviewed



Station Description



Model	MB 1100 SF
Application	Acid, bases, oxidizers
Make-up rate	0.5 GPM
# of chemicals	Three or two plus DI
Flow path	3/4"
Dispense rate	2.5 GPM @ 25 psi
Repeatability	±0.5% Volumetric accuracy
Materials—flow path	PFA Teflon tubing
Cabinet Materials	Polypropylene
Safety	S2 - 93 Reviewed
Footprint	42" x 36" x 94"
Day Tank	Customer Specific

Facility Requirements	MB 1100 SF	Connection Type
DI water	5 GPM @ 25 psi	1/2" Teflon Flaretek
N ₂	70-100 psi	1/2" SS Swagelok
CDA	11 SCFM, 80 psi	3/8" SS Swagelok
Exhaust	200 SCFM, 2" H ₂ O	3" Pipe flange
Process drain	30 psi, 5 GPM	1" Teflon Flaretek
Power	120 VAC, 15 AMP service	3/4" Conduit
Cabinet drain	Gravity	3/4" FNPT Polypro

UTILITIES FOR TESTING

- ◆ DI water (18 meg ohm)
- ◆ Semiconductor grade nitrogen (99.999%)
- ◆ Clean dry air

COMPONENTS

- ◆ Teflon pumps with pulsation dampening
- ◆ PFA pressure vessels
- ◆ Non-intrusive level sensors
- ◆ Precision flowmeters
- ◆ Photoelectric leak detectors

CONTROLS

- ◆ Allen-Bradley SLC 500 series PLC
- ◆ Allen-Bradley PanelView 550 operator interface
 - ◇ System P&ID status
 - ◇ Alarm and warning screens
 - ◇ Distribution valve box status
 - ◇ Pump and filter runtime screens
 - ◇ Password protected blend and flush recipe modification screens
 - ◇ Password protected calibration screens
 - ◇ Password protected maintenance screens
 - ◇ Manual activation of valves/pumps from maintenance screens
- ◆ Connectivity to system PLCs & MegaView™ Supervisory via DH+ or Ethernet network
- ◆ Local and remote EMO capability
- ◆ Communication with PC via PLC network

Mega Fluid Systems, Mega Systems, and Mega are trademarks of Mega Fluid Systems, Inc. All other product or service names mentioned in this document may be trademarks of the companies with which they are associated. System descriptions are typical and subject to change without notice.



Mega Fluid Systems, Inc.
 9398 SW Tualatin-Sherwood Road
 Tualatin, OR 97062
 Telephone 971.277.9000
 Facsimile 971.277.9010
 www.megafluidsystems.com