



MegaPure™ 100

Chemical Distribution System

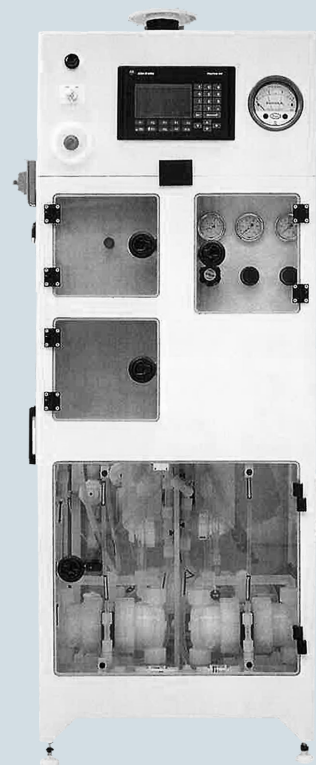
SYSTEM FEATURES

The MegaFlow 100 Chemical Distribution System with pulsation dampener provides single pass filtration at 0.05 μ for acids, bases, and oxidizers with a space efficient footprint. It is generally configured for one or two 55 gallon feed drums. Advanced microprocessor PLC-based controls are isolated in a separate nitrogen purged compartment. PLC network communication enhances the system's user-friendly operator interface panel.

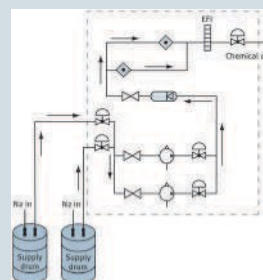
- ◆ Excess flow indication and shutdown
- ◆ Photoelectric leak detection and alarm
- ◆ Manual N2 pump and filter purging
- ◆ Recirculating DI spray gun
- ◆ Cabinet door interlocks
- ◆ Teflon™ pump with pulsation dampening
- ◆ Manual valve isolation of inlet and outlet lines and pump
- ◆ Non-intrusive drum empty detection
- ◆ Cartridge filter (10")

OPTIONS

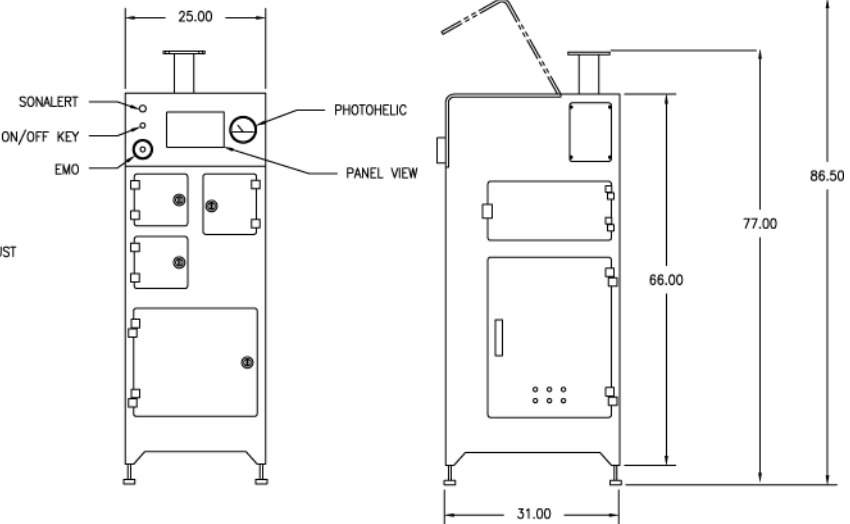
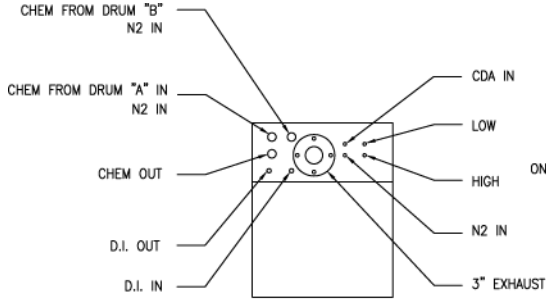
- ◆ Sample port
- ◆ Dual supply source with auto-changeover
- ◆ High capacity (HC)
- ◆ Redundant pump
- ◆ Redundant filter (standard on HC)
- ◆ Aspirated drain
- ◆ FRPP cabinet (S2-92 and FM4910 reviewed)
- ◆ Drum cabinets
- ◆ CE Mark 220 V, 50Hz
- ◆ Particle counter connection
- ◆ Custom configuration and integration



- ◆ Economical
- ◆ Space-efficient design
- ◆ Single pass chemical filtration
- ◆ Pulsation dampening of pump
- ◆ Sample point for distribution
- ◆ SEMI S2-93 reviewed
- ◆ High-capacity option



Station Description



RELIABILITY

- > 2,500 hrs MTBF
- > 1,250 hrs MTBA
- < 2 hrs MTTR
- > 95% availability

FLOW RATE

- 2.5 GPM @ 20 psi (Regular Flow)
- 6 GPM @ 20 psi HC (High Capacity)
- (DI water @ Exit of CDU outlet)

UTILITIES FOR TESTING

- ◆ DI water (18 meg ohm)
- ◆ Semiconductor grade nitrogen (99.999%)
- ◆ Clean dry air

CONTROLS

- ◆ Connectivity to system PLCs via DH+ network
- ◆ Allen-Bradley monitoring system
- ◆ Local and remote EMO capability
- ◆ Dry contacts (chemical request/chemical available)

COMPONENTS

- ◆ Teflon pumps and piping
- ◆ Non-intrusive drum empty detection
- ◆ Photoelectric leak detectors
- ◆ Cartridge filter (10")
- ◆ Pulsation dampener
- ◆ Excess flow indicator

Model	MP 100	MP 100 HC
Application	Acids, bases, oxidizers	Acids, bases, oxidizers
Flow path	3/4"	1"
Dispense rate	2.5 GPM @ 25 psi	6 GPM @ 20 psi
Cabinet Materials	Polypropylene	Polypropylene
Footprint	25" x 31" x 74"	36" x 36" x 85"
Filter Housing	10" Cartridge filter	10" Cartridge filter(s)
Leak detection	Yes	Yes

Facility requirements	MP 100SS	Connection Type
DI	5 GPM @ 25 psi	1/2" Teflon Flaretek
N ₂	2 SCFM, 90 psi 3 SCFM, 90 psi (HC)	3/8" SS Swagelok
CDA	10 SCFM, 80 psi 12 SCFM, 80 psi (HC)	3/8" SS Swagelok 1/2" SS Swagelok (HC)
Exhaust	65 SCFM (dist.) 2" H ₂ O	3" Pipe flange
Process drain	30 psi, 5 GPM	3/4" FNPT Polypro
Power	120 VAC, 15 AMP service	3/4" Conduit
Cabinet drain	Gravity	3/4" FNPT Polypro



Mega Fluid Systems, Inc.
 9398 SW Tualatin-Sherwood Road
 Tualatin, OR 97062
 Telephone 971.277.9000
 Facsimile 971.277.9010
 www.megafluidsystems.com

Mega Fluid Systems, Mega Systems, and Mega are trademarks of Mega Fluid Systems, Inc. All other product or service names mentioned in this document may be trademarks of the companies with which they are associated. System descriptions are typical and subject to change without notice.